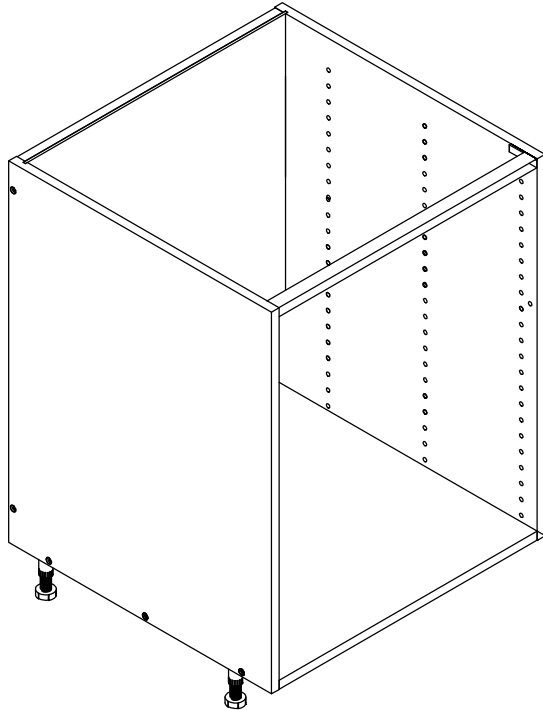


# COOK TOP/SINK CABINET ASSEMBLY INSTRUCTION

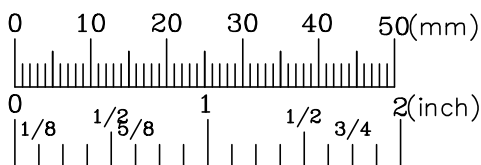
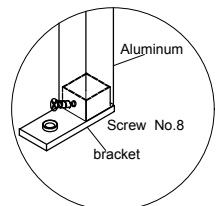
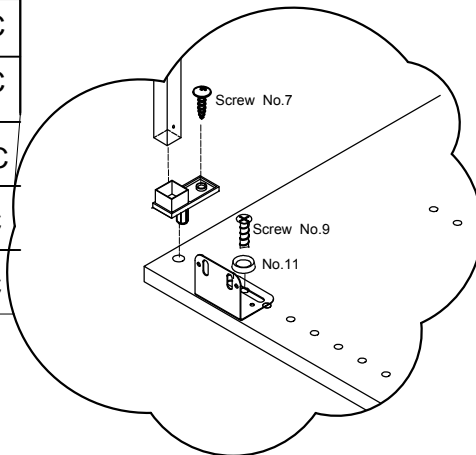


Item No.

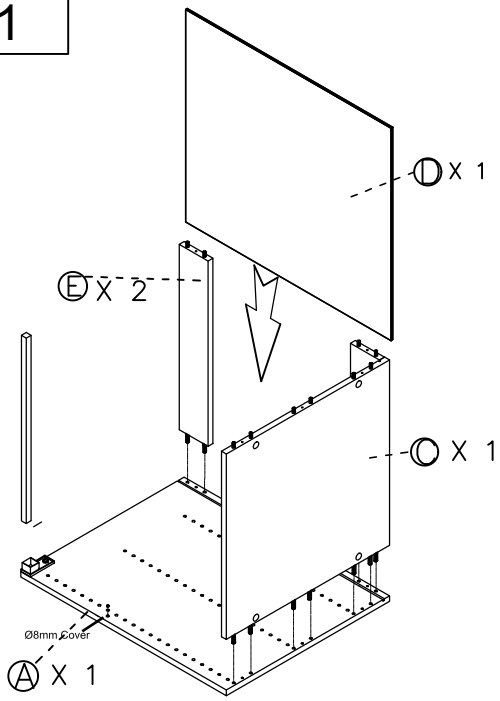
UBS24	UVSB24
UBS27	UVSB27
UBS30	UVSB30
UBS33	UVSB33
UBS36	UVSB36

Hardware Fitting			
1	Screw	Ø7*50mm(2")	40PC
2	Leg	4 1/2"	4PC
3	Aluminum Rail		1PC
4	Plastic Bracket		2PC
5	Bracket		2PC
6	Screw for Leg	Ø4*15mm(5/8")	20PC
7	Screw for plastic Bracket to side panel	Ø4*15mm(5/8")	2PC
8	Screw for plastic Bracket install to aluminum	Ø4*12mm(1/2")	2PC
9	Screw for metal Bracket	Ø6*11mm(1/2")	2PC
10	Screw for metal Bracket to false drawer and side panel	Ø4*15mm(5/8")	12PC
11	Shim for screw No.9		2PC
12	Hole Plastic cover		2PC

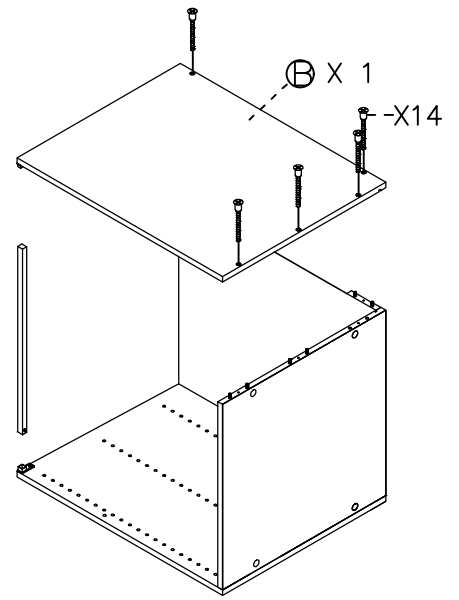
A	Left Side Panel	1PC
B	Right Side Panel	1PC
C	Bottom Panel	1PC
D	Back Panel	1PC
E	Support Rail	2PC



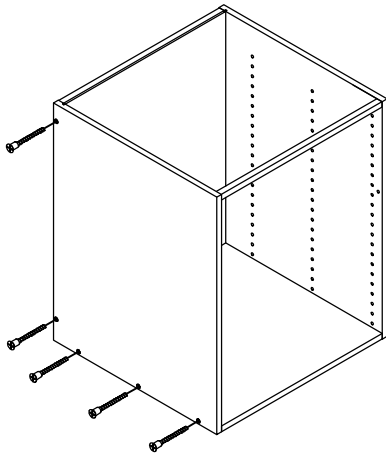
### Step1



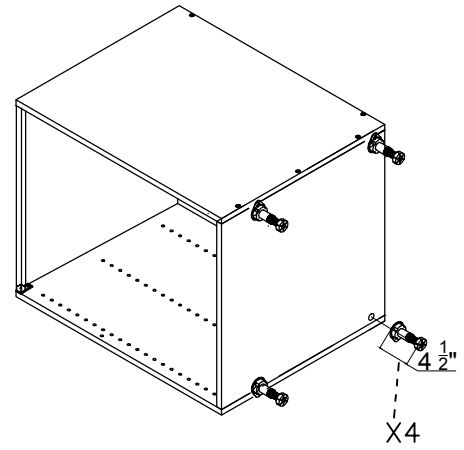
### Step2



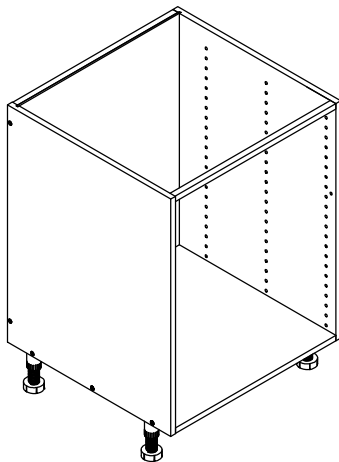
### Step3



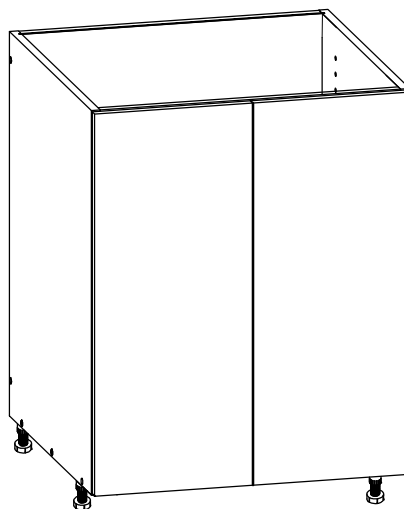
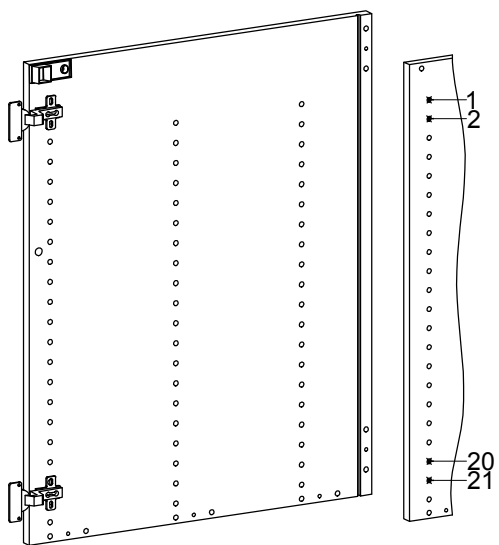
### Step4



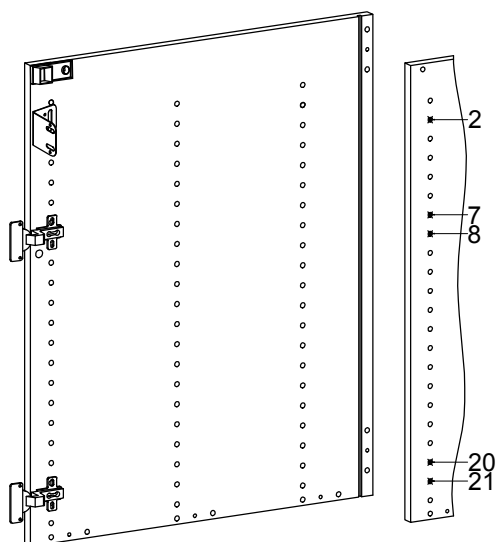
### Step5



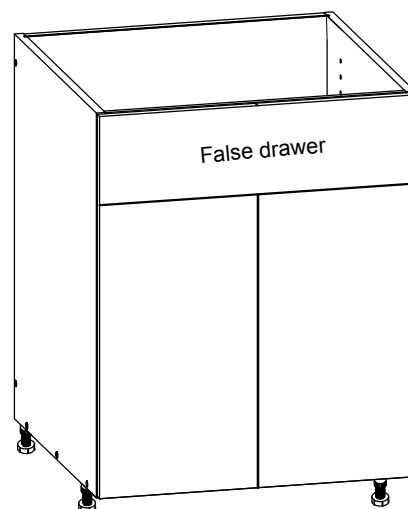
## 1.Full door



## 2.False drawer&door

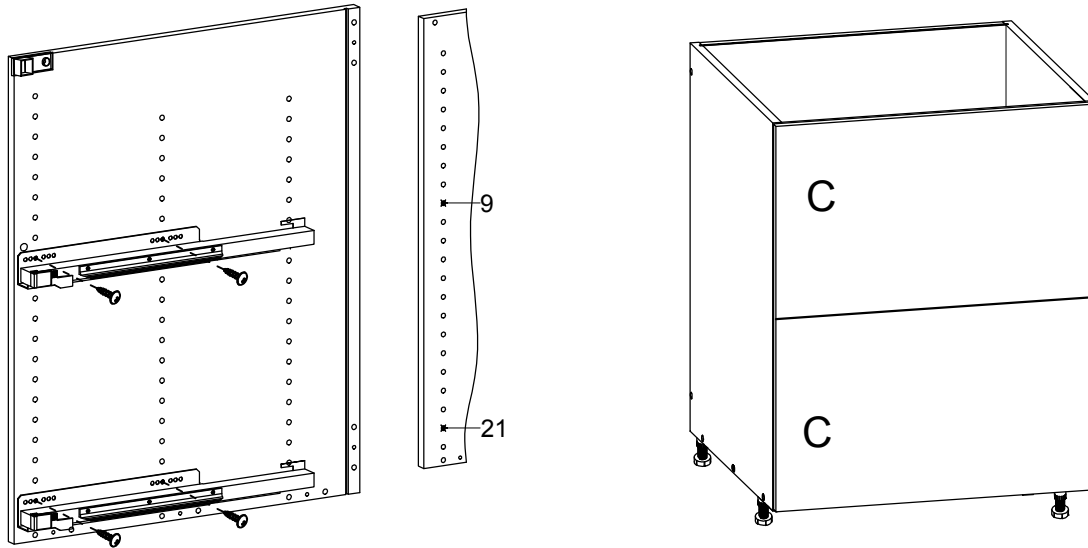


- \* Take away the Bumpers on the drawer front before assemble the false drawer front.



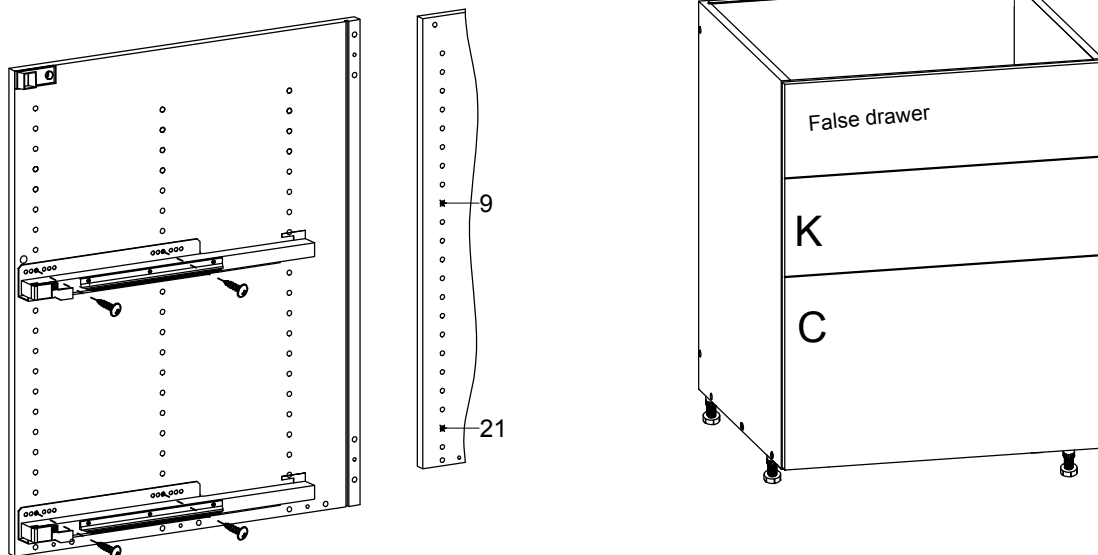
# Cook Top Cabinet

## 1. Two drawers



## 2. Two drawers with false drawer

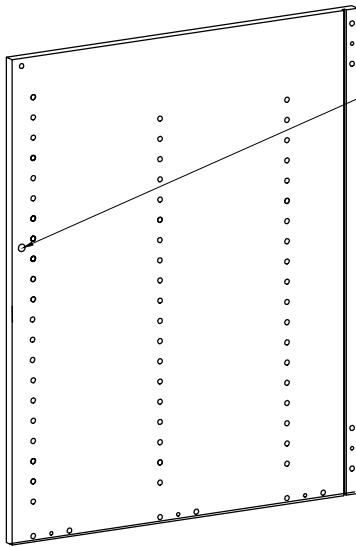
\* Take away the Bumpers on the drawer front before assemble the false drawer front.



# Farmer Sink Base

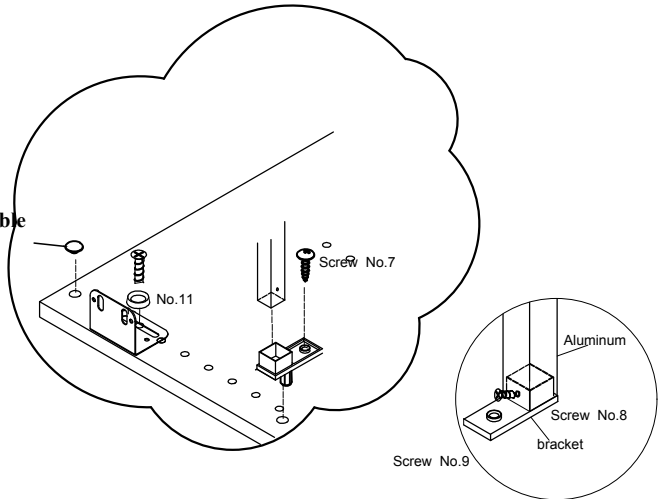
## 1. Two doors

### Step 1

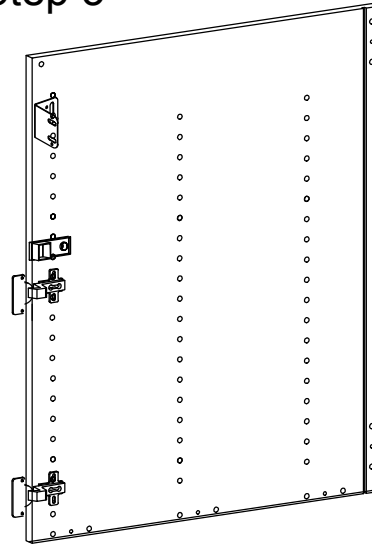


use this hole to assemble the Aluminum insert sametime cover the extra hole on the top

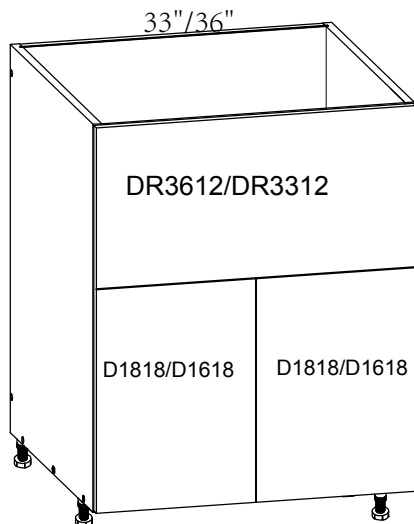
### Step 2



### Step 3



### Step 4



**1 Assembly**  
First, slide all the hinges, from the front, onto the mounting plates.

**2** Then press lightly on each successive hinge until the arm latches onto the mounting plate with an audible click!

**3 Disassembly**  
It is carried out in the opposite direction from bottom to top. The hinge is unlatched by pressing lightly on latch (1) which is hidden under the side arm.

**4** In one movement, the hinge arm is lifted off the mounting plate (2) and the door is removed from the cabinet (3).

**i Remove cover cap for hinge adjustment**

**Adjustment**

- 1. Overlay adjustment: + 2 / - 2 mm**  
Turn screw (A) clockwise: Door overlay decreases (-).  
Turn screw (A) anticlockwise: Door overlay increases (+).
- 2. Depth adjustment: + 3 / - 2 mm**  
Direct, infinitely variable depth adjustment by turning the screw (B).
- 3. Height adjustment: + 2 / - 2 mm**  
Loosen fixing screws (C) slightly and adjust height of door. Then tighten fixingscrews again.

Technische Änderungen vorbehalten.  
Keine Gewährleistung für Druckfehler  
und Irrtümer.

Subject to technical alterations.  
Errors and omissions excepted.

Sous réserve de modifications techniques.  
Notre responsabilité ne sera engagée  
en cas de fautes de frappe ou d'erreurs.

Salvo modifiche tecniche.  
Nessuna garanzia per errori di stampa  
ed errori.

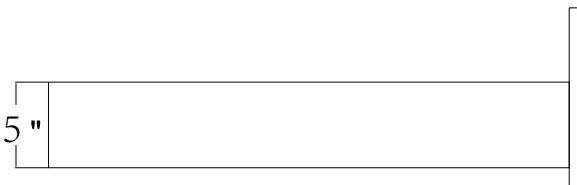
Se reserva el derecho a realizar modificaciones técnicas. No ofrecemos  
garantía alguna respecto a eventuales  
erratas de impresión u otros errores.

Technische wijzigingen voorbehouden.  
Wij zijn niet verantwoordelijk voor  
drukfouten of andere vergissingen.

## DRAWER BOX HEIGHT



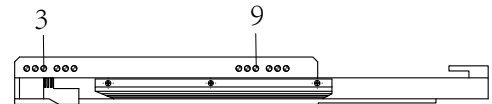
K



K

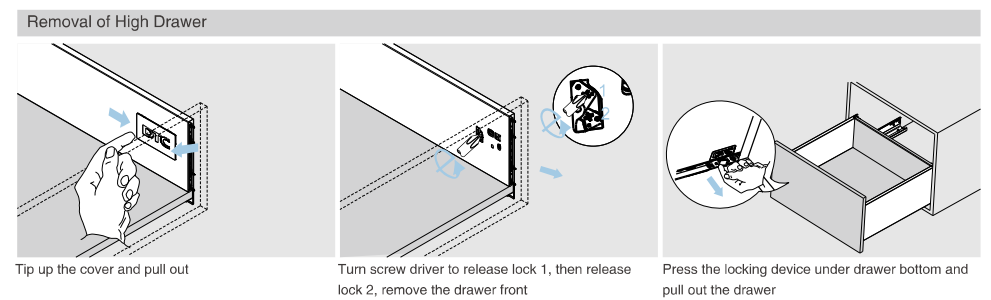
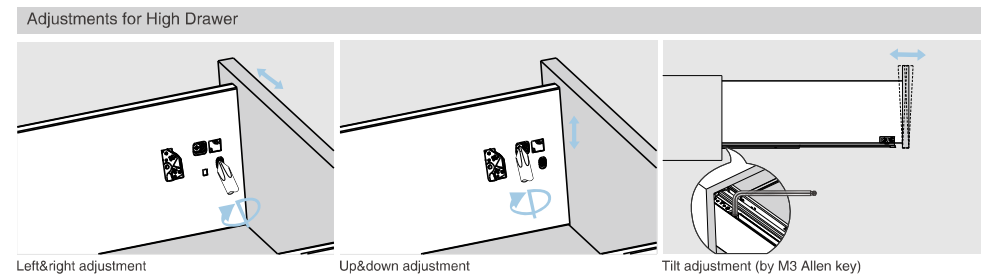
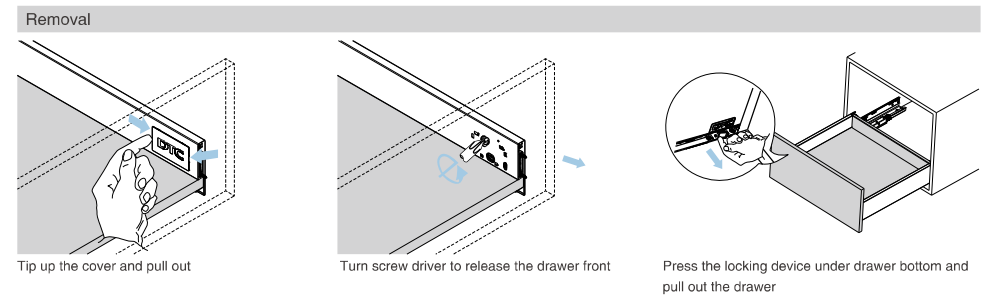
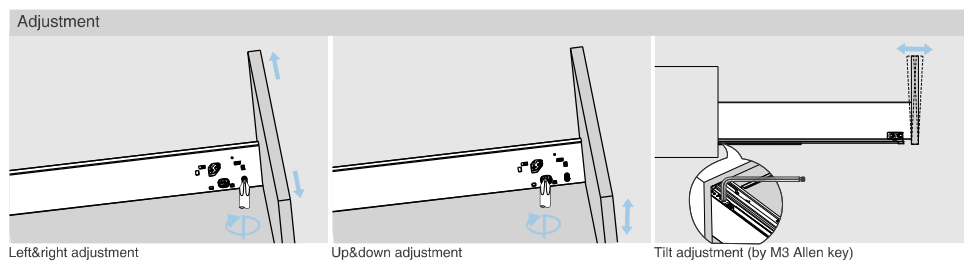
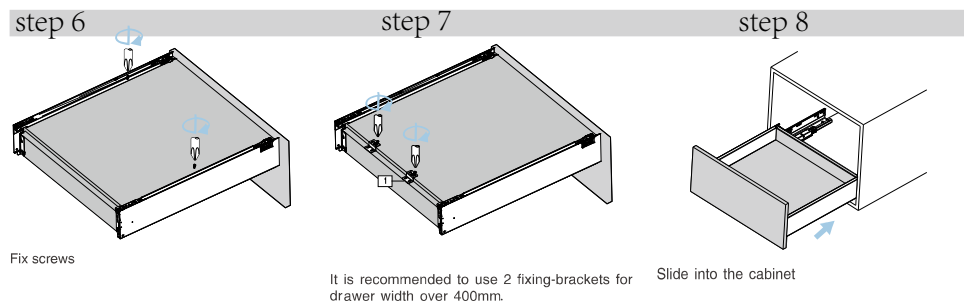
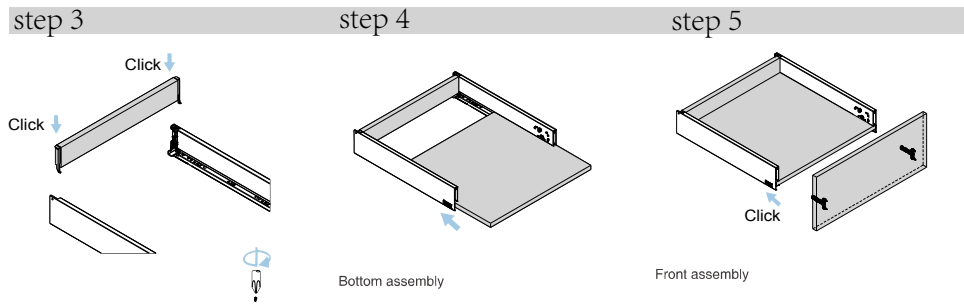
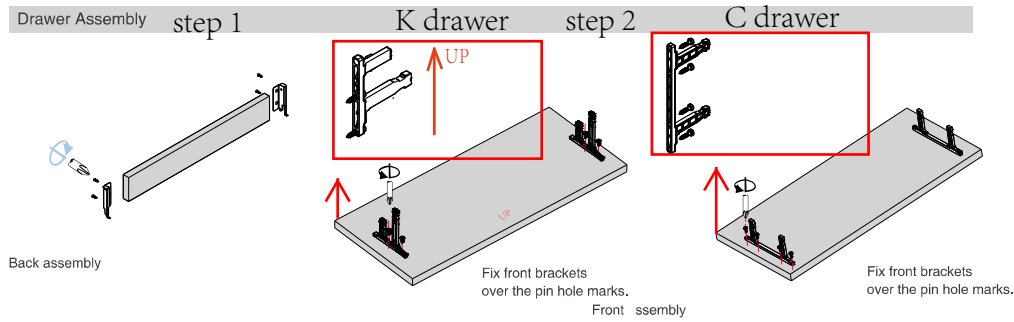


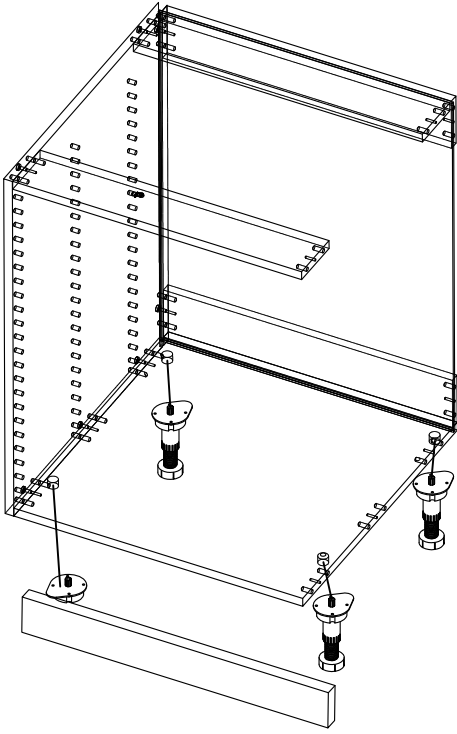
C



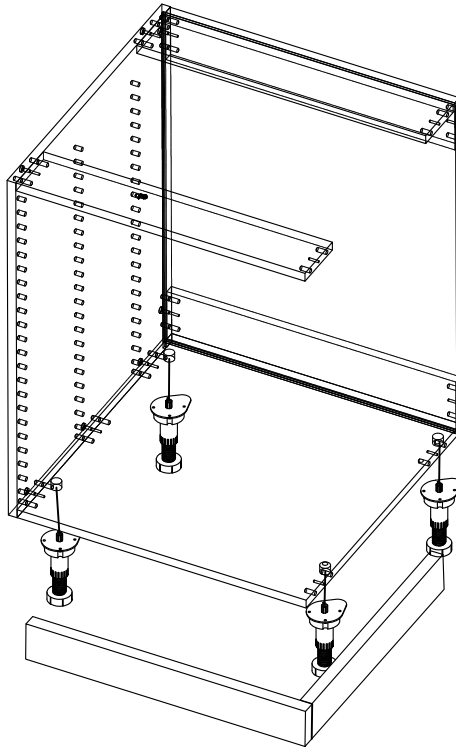
# Drawer Box

## Assembly and adjustments

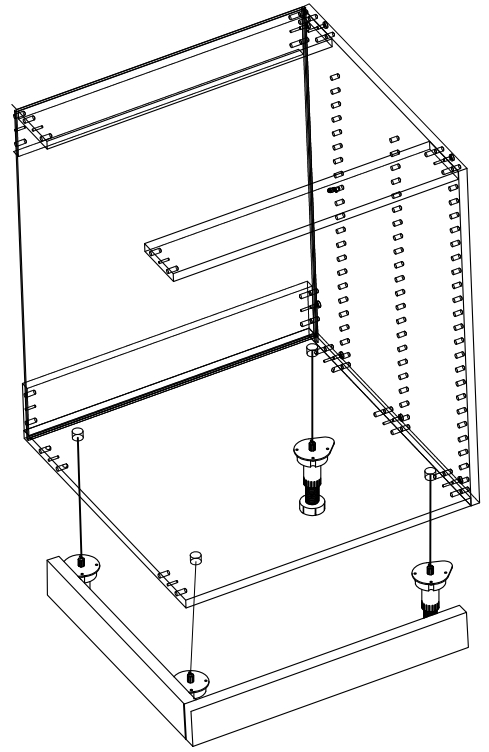




front



front and right



front and left

# LEGS AND TOEKICK

require screwing in, no  
predrilled holes

